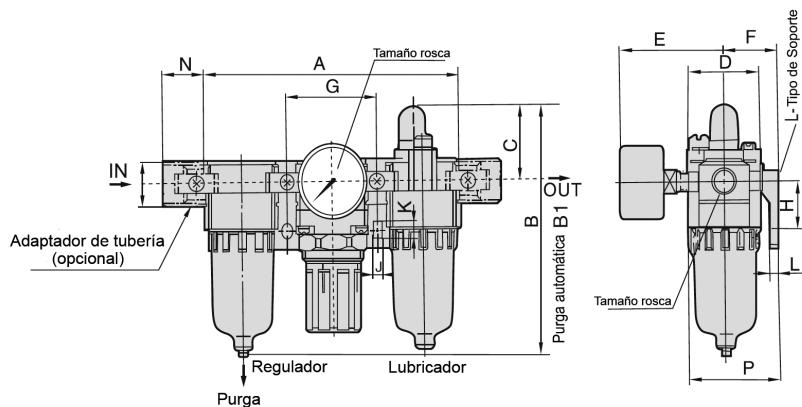


UNIDAD DE TRATAMIENTO DE AIRE COMPRIMIDO

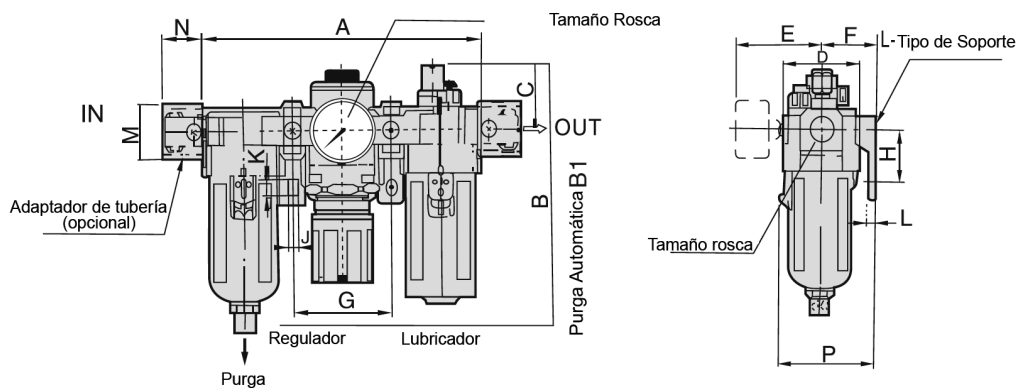
SERIE EC - Filtro/Regulador + Lubricador



MEDIDAS 1000 - 2000:



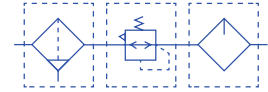
MEDIDAS 3000 - 5000:



| Tamaño | Tamaño Rosca | A | B | B1 | C | D | E | F | G | H | J | K | L | M | N | P |
|--------|--------------|-----|-------|-------|------|----|------|------|-----|----|-----|-----|------|------|----|------|
| 1000 | M5 | 91 | 84,5 | - | 25,5 | 25 | 26 | 25 | 33 | 20 | 4,5 | 7,5 | 5 | 17,5 | 16 | 38,5 |
| 2000 | 1/8"- 1/4" | 140 | 125 | 163 | 38 | 40 | 56,8 | 30 | 50 | 24 | 5,5 | 8,5 | 5 | 22 | 23 | 50 |
| 3000 | 1/4"- 3/8" | 181 | 156,5 | 170 | 38 | 53 | 60,8 | 41 | 64 | 35 | 7 | 11 | 7 | 34,2 | 26 | 70,5 |
| 4000 | 3/8"- 1/2" | 238 | 191,5 | 194,5 | 41 | 70 | 65,5 | 50 | 84 | 40 | 9 | 13 | 7 | 42,2 | 33 | 88 |
| 5000 | 3/4"- 1" | 300 | 271,5 | 274,5 | 48 | 90 | 75,5 | 69,8 | 105 | 50 | 12 | 16 | 10,5 | 55,2 | 40 | 115 |

UNIDAD DE TRATAMIENTO DE AIRE COMPRIMIDO

SERIE EC - Filtro/Regulador + Lubricador



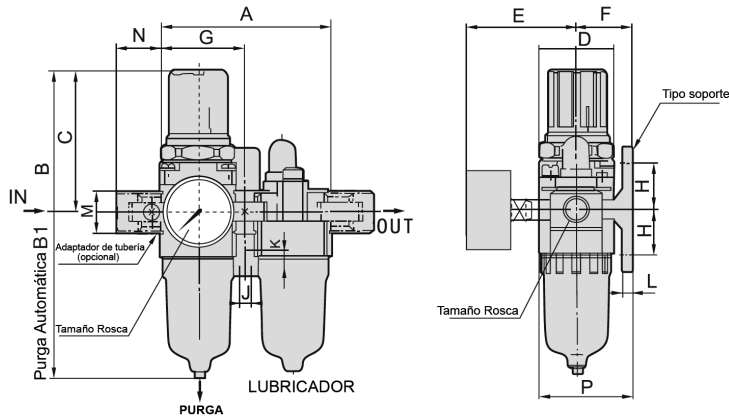
| Modelo completo | Compuesto por | | ESPECIFICACIONES | | | | Accesorios unión |
|-----------------|--------------------|------------|------------------|--------------|---------------------|-----------|------------------|
| | Filtro - Regulador | Lubricador | *Caudal (l/min) | Conexión (G) | Rosca del manómetro | Peso (kg) | |
| EC1010-M5 | EW1000 | EL1000 | 90 | M5 | 1/16 | 0,22 | Y10T |
| EC2010-01 | EW2000 | EL2000 | 945 | 1/8 | 1/8 | 0,66 | Y20T |
| EC2010-02 | | | 960 | 1/4 | | | |
| EC3010-02 | | | 1874 | 1/4 | | | |
| EC3010-03 | EW3000 | EL3000 | 1956 | 3/8 | 1/8 | 0,98 | Y30T |
| EC4010-03 | | | 4923 | 3/8 | | | |
| EC4010-04 | EW4000 | EL4000 | 5120 | 1/2 | 1/4 | 1,93 | Y40T |
| EC5010-06 | | | 6000 | 3/4 | | | |
| EC5010-10 | EW5000 | EL5000 | 6200 | 1 | 1/4 | 3,2 | Y60T |

* La información se basa en la presión de suministro de 8,0 bar y la presión de ajuste de 6,3 bar.
 OPCIONES: 1. EIC para opción con manómetro integrado (añadir I intercalada en la referencia inicial).
 2. Opción de filtraje 5 micras, especificando 5µ al final de la referencia.
 3. Opción de purga automática, especificar D al final de la referencia.



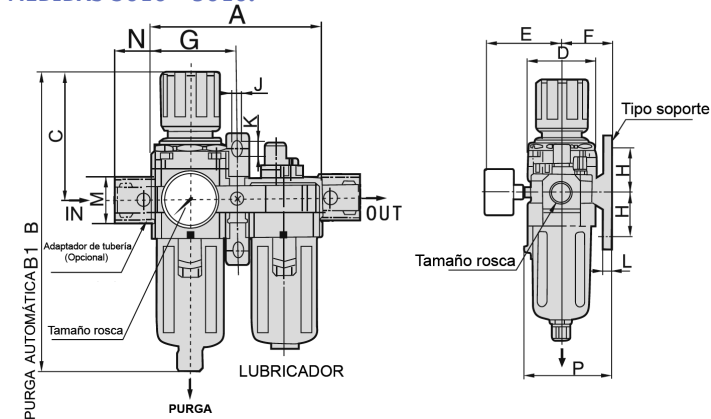
EC

MEDIDAS 1010 - 2010:



EIC

MEDIDAS 3010 - 5010:



| Tamaño | Tamaño Rosca | A | B | B1 | C | D | E | F | G | H | J | K | L | M | N | P |
|--------|--------------|-----|-------|-------|------|----|------|------|------|----|-----|-----|------|------|----|------|
| EC1010 | M5 | 58 | 109,5 | - | 50,5 | 25 | 26 | 25 | 29 | 20 | 4,5 | 7,5 | 5 | 17,5 | 16 | 38,5 |
| EC2010 | 1/8"- 1/4" | 90 | 164,5 | 202,5 | 78 | 40 | 56,8 | 30 | 45 | 24 | 5,5 | 8,5 | 5 | 22 | 23 | 50 |
| EC3010 | 1/4"- 3/8" | 117 | 211 | 224,5 | 92,5 | 53 | 60,8 | 41 | 58,5 | 35 | 7 | 11 | 7 | 34,2 | 26 | 70,5 |
| EC4010 | 3/8"- 1/2" | 154 | 262 | 265 | 112 | 70 | 65,5 | 50 | 77 | 40 | 9 | 13 | 7 | 42,2 | 33 | 88 |
| EC5010 | 3/4"- 1" | 195 | 338 | 341 | 116 | 90 | 75,5 | 69,8 | 97,5 | 50 | 12 | 16 | 10,5 | 55,2 | 40 | 115 |