

RACORES EN PA POLIAMIDA



CARACTERÍSTICAS:

- Racores rápidos en PA (poliamida 6.6).
- Color gris.
- Montaje fácil y rápido.
- Gama completa.
- Ligero y económico.

- Presión nominal: 10 bar a 20°C (Factor de seguridad 3).
- Temperatura de trabajo: -40°C a +80°C.
- No exponer directamente a rayos UV.

Consulte programa más amplio en www.accesfluid.com

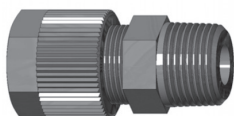
PRINCIPAL APLICACIÓN:

- Conducción técnica de fluidos.

Tubo: racores diseñados para espesor de pared de 1 m. (excepto para tubo 7x10 y 9x12).

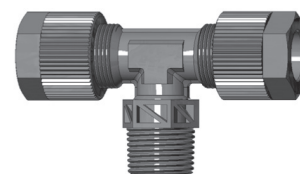
Ø D-R
S031121 06-01
S031121 06-02
S031121 06-03
S031121 08-01
S031121 08-02
S031121 08-03
S031121 10-02
S031121 10-03
S031121 12-02
S031121 12-03
S031121 12-04

Ø D-R
S031121 12/9-03
S031121 12/9-04



S031121
Macho cónico.

Ø D-R
S033721 06-01
S033721 06-02
S033721 08-01
S033721 08-02
S033721 10-02
S033721 10-03



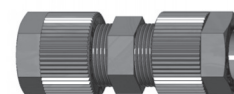
S033721
"T" macho central.

Ø D-R
S031124 06-01
S031124 06-02
S031124 06-03
S031124 08-01
S031124 08-02
S031124 08-03
S031124 10-02
S031124 10-03
S031124 12-03
S031124 12-04



S031124
Macho cilíndrico con OR NBR

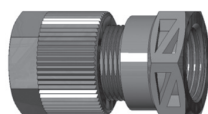
Ø D-R	Ø D-R
S031021 06	S031021 12/9
S031021 08	
S031021 10	
S031021 12	



S031021
Unión tubo / tubo.

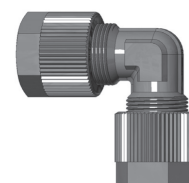
Ø D-R
S031221 06-01
S031221 06-02
S031221 06-03
S031221 06-04
S031221 08-01
S031221 08-02
S031221 08-03
S031221 08-04
S031221 10-02
S031221 10-03
S031221 12-03
S031221 12-04

Ø D-R
S031221 12/9-03
S031221 12/9-04



S031221
Unión hembra.

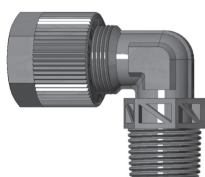
Ø D-R	Ø D-R
S032021 06	S032021 12/9
S032021 08	
S032021 10	
S032021 12	



S032021
Codo tubo / tubo.

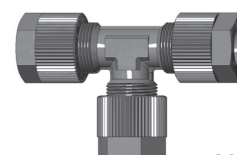
Ø D-R
S032421 06-01
S032421 06-02
S032421 08-01
S032421 08-02
S032421 10-02
S032421 10-03
S032421 10/7-02
S032421 10/7-03
S032421 12-02
S032421 12-03
S032421 12-04

Ø D-R
S032421 12/9-03



S032421
Codo macho.

Ø D-R	Ø D-R
S033021 06	S033021 12/9
S033021 08	
S033021 10	
S033021 12	



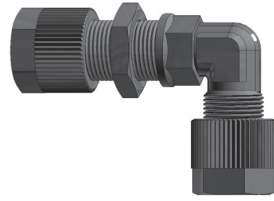
S033021
"T" tubo / tubo / tubo.



RACORES EN PA POLIAMIDA

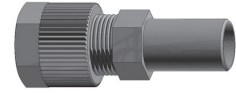
SERTO

- Ø D-R**
- S032721 06
 - S032721 08
 - S032721 10
 - S032721 12



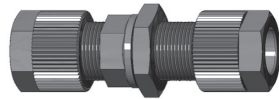
S032721
Pasamuros codo.

- Ø D-R**
- S031821 A8-06
 - S031821 A10-06
 - S031821 A10-08
 - S031821 A12-06
 - S031821 A12-08
 - S031821 A12-10



S031821
Reductor tubo.

- Ø D-R**
- S031521 06
 - S031521 08
 - S031521 10
 - S031521 12
 - S031521 12/9



S031521
Pasamuros.

- Ø D-R**
- S032621 06-A6
 - S032621 08-A8
 - S032621 10-A10
 - S032621 12-A12



S032621
Adaptador codo.

- Ø D-R**
- S037621 06-01
 - S037621 06-02
 - S037621 08-01
 - S037621 08-02
 - S037621 10-02



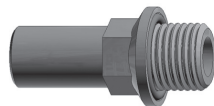
S037621
Regulator caudal bidireccional.

- Ø D-R**
- S037721 06-01
 - S037721 06-02
 - S037721 08-01
 - S037721 08-02
 - S037721 10-02
 - S037721 10-03



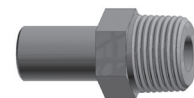
S037721
Regulator caudal unidireccional.

- Ø D-R**
- S031624 06-01
 - S031624 06-02
 - S031624 06-03
 - S031624 08-01
 - S031624 08-02
 - S031624 08-03
 - S031624 10-02
 - S031624 10-03
 - S031624 10-04
 - S031624 12-02
 - S031624 12-03
 - S031624 12-04



S031624
Adaptador rosca cilindrica con OR Vitón.

- Ø D-R**
- S031600 A6-01
 - S031600 A6-02
 - S031600 A6-03
 - S031600 A8-01
 - S031600 A8-02
 - S031600 A8-03
 - S031600 A10-02
 - S031600 A10-03
 - S031600 A12-03
 - S031600 A12-04



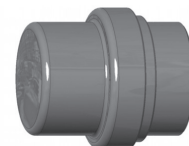
S031600
Adaptador rosca cónica.

- Ø D-R**
- S031300 06-A6
 - S031300 08-A8
 - S031300 10-A10
 - S031300 12-A12



S031300
Casquillo unión.

- Ø D**
- S030002 06
 - S030002 08
 - S030002 10
 - S030002 12



S030002
Tapón.

RACORES EN PA POLIAMIDA



Ø D-R

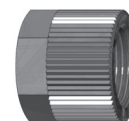
S030001 06
S030001 08
S030001 10
S030001 12



S030001
Bicono.

Ø D-R

S030020 06
S030020 08
S030020 10
S030020 12



S030020
Tuerca.

Ø D-R

S0CV33B21-6-6
S0CV33B21-8-8
S0CV33B21-10-10
S0CV33B21-12-12



S0CV33B21
Antirretorno tubo-tubo.

Racores en PA y PVDF



El conexionado idóneo para fluidos de baja presión en industria química.

REGULADOR CAUDAL Y VÁLVULA DE CIERRE EN PA POLIAMIDA

CARACTERÍSTICAS:

- . Nueva versión má compacta y un 50% más ligera.
- . Orificios integrados en cuerpo para montaje en panel.
- . Juntas bola: PTFE.
- . Junta maneta: FKM.

Ref.	Ø Tubo
S0NV32A21-6	4x6
S0NV32A21-8	6x8
S0NV32A21-10	8x10
S0NV32A21-12	10x12



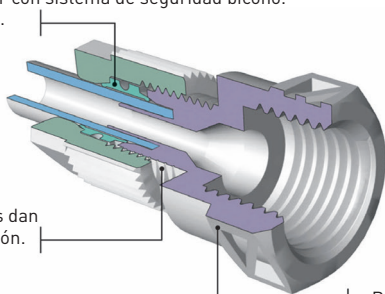
S0NV32A21
Regulador caudal PA

Ref.	Ø Tubo
S0BV38A21-6 S	4x6
S0BV38A21-8 S	6x8
S0BV38A21-10 S	8x10
S0BV38A21-12 S	10x12



S0BV38A21
Válvula de cierre PA tubo-tubo

- . Unión del tubo y racor con sistema de seguridad bicono.
- . Estanquidad perfecta.



- . Las uniones roscadas dan seguridad a la conexión.

. Buena resistencia a la presión PN 10 bar.

Ref.	Rosca
S0BV38A00-3/8 S	3/8"



S0BV38A00
Válvula de cierre PA rosca Hembra BSP

Consulte a nuestro departamento técnico para aplicaciones específicas: 937 811 612 **acesfluid**