

RACORES BICONO INSTRUMENTACIÓN DOBLE ANILLO TIPO "LOK"



Consulte programa más amplio en
www.accesfluid.com

CARACTERÍSTICAS:

- . Los racores Superlok están realizados con la máxima calidad de materiales, alta precisión de diseño, el mejor proceso tecnológico y el más estricto de los controles.
- . Material estándar: acero Inox AISI 316L [ASME]
- . También disponible en aluminio, latón, acero al carbono, Monel y Inconel (no en stock habitual).
- . Presión y temperatura de trabajo: en función de la aplicación, de la calidad del tubo y condiciones (consultar tablas específicas).

- . Temple termoquímico con ajuste doble anillo, estanqueidad perfecta, alta resistencia a las vibraciones y no deformación en la torsión del tubo.

PRINCIPALES APLICACIONES:

- . Industria química, petroquímica, refinerías, gases, energía, bancos de prueba, etc...

CERTIFICACIONES:

- . ISO 9001 y 14000, ADS, LLOYD, DNV, GL, API, OHSMS, ASME, TUV, ...



Disponibles amplia gama.
CONSÚLTENOS para otras figuras,
medidas y roscas.

Recto Tubo-Tubo métrico

Ref.	Ø D tubo
SU-4M	4 mm
SU-6M	6 mm
SU-8M	8 mm
SU-10M	10 mm
SU-12M	12 mm
SU-14M	14 mm
SU-16M	16 mm
SU-18M	18 mm



SU-M

Recto Tubo-Tubo métrico pasamuros

Ref.	Ø D tubo
SBHU-4M	4 mm
SBHU-6M	6 mm
SBHU-8M	8 mm
SBHU-10M	10 mm
SBHU-12M	12 mm
SBHU-16M	16 mm
SBHU-18M	18 mm



SBHU-M

Recto Tubo-Tubo pulgada

Ref.	Ø D tubo
SU-2	1/8"
SU-3	3/16"
SU-4	1/4"
SU-5	5/16"
SU-6	3/8"
SU-8	1/2"
SU-12	3/4"



SU-P

Recto Tubo-Tubo pulgadas pasamuros

Ref.	Ø D tubo
SBHU-2	1/8"
SBHU-4	1/4"
SBHU-5	5/16"
SBHU-6	3/8"
SBHU-8	1/2"



SBHU-P

Recto Tubo-Tubo reducido métrico

Ref.	Ø D tubo
SRU-6M-4M	6 - 4
SRU-8M-6M	8 - 6
SRU-10M-6M	10 - 6
SRU-10M-8M	10 - 8
SRU-12M-8M	12 - 8
SRU-12M-10M	12 - 10
SRU-16M-10M	16 - 10
SRU-16M-12M	16 - 12
SRU-18M-12M	18 - 12



SRU-M

Recto Tubo-Tubo reducido métrico/pulgadas

Ref.	Ø D tubo
SRU-4M-2	4 - 1/8"
SRU-4M-4	4 - 1/4"
SRU-6M-2	6 - 1/8"
SRU-6M-4	6 - 1/4"
SRU-6M-5	6 - 5/16"
SRU-8M-4	8 - 1/4"
SRU-10M-4	10 - 1/4"
SRU-10M-5	10 - 5/16"
SRU-10M-6	10 - 3/8"
SRU-12M-6	12 - 3/8"
SRU-12M-8	12 - 1/2"



SRU-P



SRU-M-P

Recto Tubo-Tubo reducido pulgadas

Ref.	Ø D tubo
SRU-4-2	1/4" - 1/8"
SRU-5-2	5/16" - 1/8"
SRU-6-2	3/8" - 1/8"
SRU-6-4	3/8" - 1/4"
SRU-8-4	1/2" - 1/4"



RACORES BICONO INSTRUMENTACIÓN DOBLE ANILLO TIPO "LOK"

Recto Tubo métrico-rosca macho BSPT

Ref.	Ø D tubo	Rosca
SMC 4M 2R	4 mm	R-1/8"
SMC 6M 2R	6 mm	R-1/8"
SMC 6M 4R	6 mm	R-1/4"
SMC 8M 2R	8 mm	R-1/8"
SMC 8M 4R	8 mm	R-1/4"
SMC 8M 6R	8 mm	R-3/8"
SMC 10M 4R	10 mm	R-1/4"
SMC 10M 6R	10 mm	R-3/8"
SMC 10M 8R	10 mm	R-1/2"
SMC 12M 6R	12 mm	R-3/8"
SMC 12M 8R	12 mm	R-1/2"



SMC-M-R

Recto Tubo métrico-rosca macho NPT

Ref.	Ø D tubo	Rosca
SMC-4M-2N	4 mm	1/8"
SMC-6M-2N	6 mm	1/8"
SMC-6M-4N	6 mm	1/4"
SMC-8M-4N	8 mm	1/4"
SMC-8M-6N	8 mm	3/8"
SMC-10M-4N	10 mm	1/4"
SMC-10M-6N	10 mm	3/8"
SMC-12M-6N	12 mm	3/8"
SMC-12M-8N	12 mm	1/2"
SMC-16M-4N	16 mm	1/4"
SMC-16M-8N	16 mm	1/2"
SMC-18M-8N	18 mm	1/2"
SMC-18M-12N	18 mm	3/4"



SMC-M-N

Recto Tubo pulgadas-rosca macho NPT

Ref.	Ø D tubo	Rosca
SMC-2-2N	1/8"	1/8"
SMC-2-4N	1/8"	1/4"
SMC-3-2N	3/16"	1/8"
SMC-3-4N	3/16"	1/4"
SMC-4-2N	1/4"	1/8"
SMC-4-4N	1/4"	1/4"
SMC-5-4N	5/16"	1/4"
SMC-5-6N	5/16"	3/8"
SMC-6-4N	3/8"	1/4"
SMC-6-6N	3/8"	3/8"
SMC-8-6N	1/2"	3/8"
SMC-8-8N	1/2"	1/2"
SMC-12-8N	3/4"	1/2"
SMC-12-12N	3/4"	3/4"



SMC-P-N

Recto Tubo métrico-rosca macho BSPP Metal-Buna

Ref.	Ø D tubo	Rosca
SGMC-4M-2G	4 mm	G-1/8"
SGMC-6M-2G	6 mm	G-1/8"
SGMC-6M-4G	6 mm	G-1/4"
SGMC-8M-4G	8 mm	G-1/4"
SGMC-8M-6G	8 mm	G-3/8"
SGMC-10M-6G	10 mm	G-3/8"
SGMC-10M-8G	10 mm	G-1/2"
SGMC-12M-6G	12 mm	G-3/8"
SGMC-12M-8G	12 mm	G-1/2"
SGMC-16M-6G	16 mm	G-3/8"
SGMC-16M-8G	16 mm	G-1/2"
SGMC-18M-8G	18 mm	G-1/2"



SGMC-M-G

Recto Tubo pulgadas-rosca macho BSPP Metal-Buna

Ref.	Ø D tubo	Rosca
SGMC-2-2G	1/8"	G-1/8"
SGMC-2-4G	1/8"	G-1/4"
SGMC-4-2G	1/4"	G-1/8"
SGMC-4-4G	1/4"	G-1/4"
SGMC-6-4G	3/8"	G-1/4"
SGMC-6-6G	3/8"	G-3/8"
SGMC-8-6G	1/2"	G-3/8"
SGMC-8-8G	1/2"	G-1/2"
SGMC-12-8G	3/4"	G-1/2"
SGMC-12-12G	3/4"	G-3/4"



SGMC-P-G

Recto Tubo métrico-rosca macho BSPP Metal

Ref.	Ø D tubo	Rosca
SOMC-4M-2G	4 mm	G-1/8"
SOMC-6M-2G	6 mm	G-1/8"
SOMC-6M-4G	6 mm	G-1/4"
SOMC-8M-4G	8 mm	G-1/4"
SOMC-8M-6G	8 mm	G-3/8"
SOMC-10M-6G	10 mm	G-3/8"
SOMC-10M-8G	10 mm	G-1/2"



SOMC-M-G

Recto Tubo métrico-rosca hembra BSPP manómetro

Ref.	Ø D tubo	Rosca
SGC-6M-4G	6 mm	G-1/4"
SGC-8M-6G	8 mm	G-3/8"
SGC-10M-6G	10 mm	G-3/8"
SGC-12M-8G	12 mm	G-1/2"



SGC-M-G

Recto Tubo métrico-rosca hembra NPT manómetro

Ref.	Ø D tubo	Rosca
SGC-6M-4N	6 mm	1/4"
SGC-8M-6N	8 mm	3/8"
SGC-10M-6N	10 mm	3/8"
SGC-12M-8N	12 mm	1/2"



SGC-M-N

RACORES BICONO INSTRUMENTACIÓN DOBLE ANILLO TIPO "LOK"



Recto Tubo pulgadas-rosca hembra BSPP manómetro

Ref.	Ø D tubo	Rosca
SGC-4-4G	1/4"	G-1/4"
SGC-6-6G	3/8"	G-3/8"
SGC-8-8G	1/2"	G-1/2"



SGC-P-G

Recto Tubo pulgadas-rosca macho NPT pasamuros

Ref.	Ø D tubo	Rosca
SMCB-2-2N	1/8"	1/8"
SMCB-4-2N	1/4"	1/8"
SMCB-4-4N	1/4"	1/4"
SMCB-6-4N	3/8"	1/4"
SMCB-6-6N	3/8"	3/8"
SMCB-8-6N	1/2"	3/8"
SMCB-8-8N	1/2"	1/2"



SMCB-P-N

Recto Tubo métrico-rosca macho NPT pasamuros

Ref.	Ø D tubo	Rosca
SMCB-6M-4N	6 mm	1/4"
SMCB-10M-4N	10 mm	1/4"
SMCB-12M-8N	12 mm	1/2"



SMCB-M-N

Codo 90° Tubo-Tubo métrico

Ref.	Ø D tubo
SUE-4M	4 mm
SUE-6M	6 mm
SUE-8M	8 mm
SUE-10M	10 mm
SUE-12M	12 mm
SUE-16M	16 mm
SUE-18M	18 mm



SUE-M

Codo 90° Tubo-Tubo pulgadas

Ref.	Ø D tubo
SUE-2	1/8"
SUE-4	1/4"
SUE-6	3/8"
SUE-8	1/2"
SUE-12	3/4"



SUE-P

Codo 90° Tubo métrico-rosca fija macho BSPT

Ref.	Ø D tubo	Rosca
SME-4M-2R	4 mm	R-1/8"
SME-6M-2R	6 mm	R-1/8"
SME-6M-4R	6 mm	R-1/4"
SME-8M-2R	8 mm	R-1/8"
SME-8M-4R	8 mm	R-1/4"
SME-8M-6R	8 mm	R-3/8"
SME-8M-8R	8 mm	R-1/2"
SME-10M-6R	10 mm	R-3/8"
SME-10M-8R	10 mm	R-1/2"
SME-12M-6R	12 mm	R-3/8"
SME-12M-8R	12 mm	R-1/2"



SME-M-R

Codo 90° Tubo pulgadas-rosca fija macho NPT

Ref.	Ø D tubo	Rosca
SME-2-2N	1/8"	1/8"
SME-2-4N	1/8"	1/4"
SME-4-2N	1/4"	1/8"
SME-4-4N	1/4"	1/4"
SME-6-4N	3/8"	1/4"
SME-6-6N	3/8"	3/8"
SME-8-6N	1/2"	3/8"
SME-8-8N	1/2"	1/2"



SME-P-N

Codo 90° Tubo métrico-rosca giratoria macho BSPP

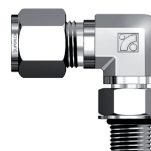
Ref.	Ø D tubo	Rosca
SPME-6M-2G	6 mm	G-1/8"
SPME-6M-4G	6 mm	G-1/4"
SPME-8M-4G	8 mm	G-1/4"
SPME-10M-4G	10 mm	G-1/4"
SPME-10M-6G	10 mm	G-3/8"
SPME-12M-8G	12 mm	G-1/2"



SPME-M-G

Codo 90° Tubo pulgadas-rosca giratoria macho BSPP

Ref.	Ø D tubo	Rosca
SPME-4-2G	1/4"	G-1/8"
SPME-4-4G	1/4"	G-1/4"
SPME-6-4G	3/8"	G-1/4"
SPME-6-6G	3/8"	G-3/8"
SPME-8-6G	1/2"	G-3/8"
SPME-8-8G	1/2"	G-1/2"



SPME-P-G



RACORES BICONO INSTRUMENTACIÓN DOBLE ANILLO TIPO "LOK"

T -Tubo-Tubo-Tubo métricos

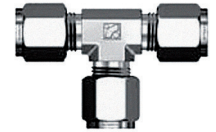
Ref.	Ø D tubo
SUT-4M	4 mm
SUT-6M	6 mm
SUT-8M	8 mm
SUT-10M	10 mm
SUT-12M	12 mm
SUT-16M	16 mm
SUT-18M	18 mm



SUT-M

T -Tubo-Tubo-Tubo pulgadas

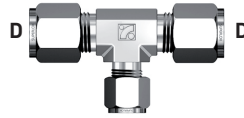
Ref.	Ø D tubo
SUT-2	1/8"
SUT-4	1/4"
SUT-6	3/8"
SUT-8	1/2"



SUT-P

T Reducida -Tubo-Tubo-Tubo pulgadas

Ref.	Ø D tubo (D)	Ø D tubo (D1)
SRUT-6-4	3/8"	1/4"
SRUT-8-4	1/2"	1/4"
SRUT-8-6	1/2"	3/8"
SRUT-12-8	3/4"	1/2"



D1

SRUT-P

T -Tubo métrico-rosca fija macho BSPT

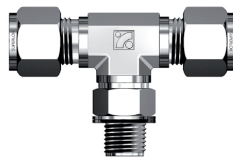
Ref.	Ø D tubo	Rosca
SMBT-4M-2R	4 mm	R-1/8"
SMBT-6M-2R	6 mm	R-1/8"
SMBT-6M-4R	6 mm	R-1/4"
SMBT-8M-2R	8 mm	R-1/8"
SMBT-8M-4R	8 mm	R-1/4"
SMBT-10M-4R	10 mm	R-1/4"
SMBT-10M-6R	10 mm	R-3/8"
SMBT-12M-6R	12 mm	R-3/8"
SMBT-12M-8R	12 mm	R-1/2"



SMBT-M-R

T -Tubo pulgadas-rosca giratoria macho BSPP

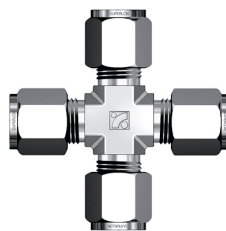
Ref.	Ø D tubo	Rosca
SPMBT-4-2G	1/4"	G-1/8"
SPMBT-4-4G	1/4"	G-1/4"
SPMBT-6-4G	3/8"	G-1/4"
SPMBT-8-6G	1/2"	G-3/8"
SPMBT-8-8G	1/2"	G-1/2"



SPMBT-P-G

Cruz Tubo métrico

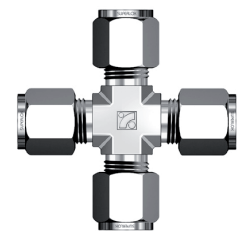
Ref.	Ø D tubo
SUC-4M	4 mm
SUC-6M	6 mm
SUC-8M	8 mm
SUC-10M	10 mm
SUC-12M	12 mm



SUC-M

Cruz Tubo pulgadas

Ref.	Ø D tubo
SUC-2	1/8"
SUC-4	1/4"
SUC-6	3/8"
SUC-8	1/2"



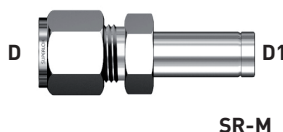
SUC-P

RACORES BICONO INSTRUMENTACIÓN DOBLE ANILLO TIPO "LOK"



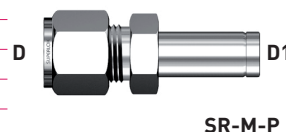
Reductor Tubo métrico

Ref.	Ø D tubo (D)	Ø D tubo (D1)
SR-4M-6M	4 mm	6 mm
SR-6M-10M	6 mm	10 mm
SR-8M-10M	8 mm	10 mm
SR-8M-12M	8 mm	12 mm
SR-10M-6M	10 mm	6 mm
SR-12M-6M	12 mm	6 mm
SR-12M-8M	12 mm	8 mm
SR-12M-16M	12 mm	16 mm
SR-12M-18M	12 mm	18 mm



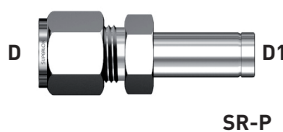
Reductor Tubo métrico-Tubo pulgadas

Ref.	Ø D tubo (D)	Ø D tubo (D1)
SR-6M-4	6 mm	1/4"
SR-6M-6	6 mm	3/8"
SR-8M-6	8 mm	3/8"
SR-8M-8	8 mm	1/2"
SR-10M-6	10 mm	3/8"
SR-10M-8	10 mm	1/2"
SR-12M-8	12 mm	1/2"



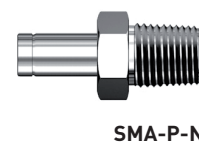
Reductor Tubo pulgadas

Ref.	Ø D tubo (D)	Ø D tubo (D1)
SR-2-8	1/8"	1/2"
SR-4-2	1/4"	1/8"
SR-4-6	1/4"	3/8"
SR-4-8	1/4"	1/2"
SR-6-4	3/8"	1/4"
SR-6-8	3/8"	1/2"
SR-8-4	1/2"	1/4"
SR-8-6	1/2"	3/8"



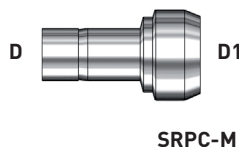
Adaptador Tubo pulgadas-rosca macho NPT

Ref.	Ø D tubo	Rosca
SMA-2-2N	1/8"	1/8"
SMA-2-4N	1/8"	1/4"
SMA-4-4N	1/4"	1/4"
SMA-4-6N	1/4"	3/8"
SMA-6-6N	3/8"	3/8"
SMA-6-8N	3/8"	1/2"
SMA-8-6N	1/2"	3/8"
SMA-8-8N	1/2"	1/2"



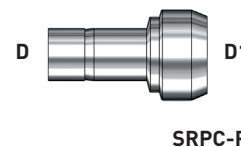
Reductor Tubo conector métrico

Ref.	Ø D tubo (D)	Ø D tubo (D1)
SRPC-10M-6M	10 mm	6 mm
SRPC-10M-8M	10 mm	8 mm
SRPC-12M-6M	12 mm	6 mm
SRPC-12M-8M	12 mm	8 mm
SRPC-12M-10M	12 mm	10 mm
SRPC-16M-12M	16 mm	12 mm



Reductor Tubo conector pulgadas

Ref.	Ø D tubo (D)	Ø D tubo (D1)
SRPC-4-2	1/4"	1/8"
SRPC-6-2	3/8"	1/8"
SRPC-6-4	3/8"	1/4"
SRPC-8-4	1/2"	1/4"
SRPC-8-6	1/2"	3/8"
SRPC-12-8	3/4"	1/2"
SRPC-16-8	1"	1/2"



Tapón para cuerpo racor tubo métrico

Ref.	Ø D tubo
SP-4M	4 mm
SP-6M	6 mm
SP-8M	8 mm
SP-10M	10 mm
SP-12M	12 mm
SP-16M	16 mm
SP-18M	18 mm



Tapón para cuerpo racor tubo pulgadas

Ref.	Ø D tubo
SP-2	1/8"
SP-4	1/4"
SP-6	3/8"
SP-8	1/2"
SP-12	3/4"



Tapón para tubo métrico

Ref.	Ø D tubo
SC-4M	4 mm
SC-6M	6 mm
SC-8M	8 mm
SC-10M	10 mm
SC-12M	12 mm
SC-16M	16 mm
SC-18M	18 mm



Tapón para tubo pulgadas

Ref.	Ø D tubo
SC-2	1/8"
SC-4	1/4"
SC-6	3/8"
SC-8	1/2"





RACORES BICONO INSTRUMENTACIÓN DOBLE ANILLO TIPO "LOK"

Tuerca para tubo métrico

Ref.	Ø D tubo
SN-4M	4 mm
SN-6M	6 mm
SN-8M	8 mm
SN-10M	10 mm
SN-12M	12 mm
SN-16M	16 mm
SN-18M	18 mm



SN-M

Tuerca para tubo pulgadas

Ref.	Ø D tubo
SN-2	1/8"
SN-3	3/16"
SN-4	1/4"
SN-5	5/16"
SN-6	3/8"
SN-8	1/2"



SN-P

Kit Biconos para tubo métrico

Ref.	Ø D tubo
SFS-4M	4 mm
SFS-6M	6 mm
SFS-8M	8 mm
SFS-10M	10 mm
SFS-12M	12 mm
SFS-16M	16 mm
SFS-18M	18 mm



SFS-M

Kit Biconos para tubo pulgadas

Ref.	Ø D tubo
SFS-2	1/8"
SFS-3	3/16"
SFS-4	1/4"
SFS-5	5/16"
SFS-6	3/8"
SFS-8	1/2"



SFS-P

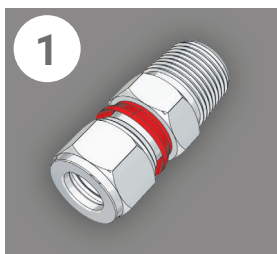
i-Fitting

SERIE DE MONTAJE DE CONEXIÓN TUBO

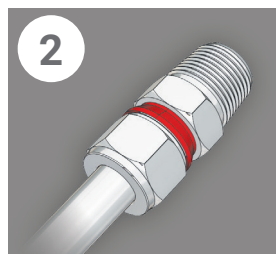
- . Racor provisto de bicono con tratamiento "especial ANTI-CORROSIÓN".
- . Anillo plástico de seguridad integrado para asegurar el correcto apriete.
- . Reduce extremadamente el tiempo de instalación.
- . Asegura la instalación perfecta.
- . No requiere calibre de inspección.
- . Disminuye el coste enormemente por la innovación en la productividad.
- . Fácil de instalar, incluso por trabajadores sin experiencia.



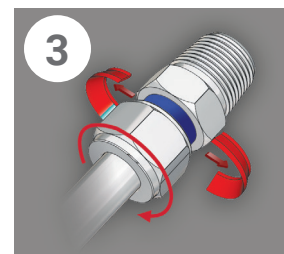
PROCEDIMIENTO DE INSTALACIÓN



1
Prepare adecuadamente el racor compuesto por el cuerpo, la tuerca delantera, la trasera y el anillo de inspección.



2
Inserte el tubo en el racor y gire la tuerca firmemente para fijarla y evitar que gire.



3
Para terminar la instalación gire la tuerca hasta que el anillo de inspección sea expulsado.



PIDA INFORMACIÓN SOBRE ESTA NUEVA GAMA DE RACORES CONEXIÓN TUBO.