

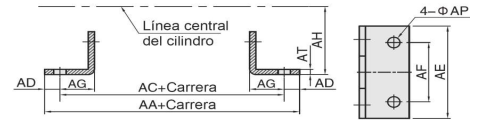
ACCESORIOS DE MONTAJE PARA CILINDROS NEUMÁTICOS

CILINDROS ISO CUADRADOS

Pie de fijación (suministro 2 unidades)



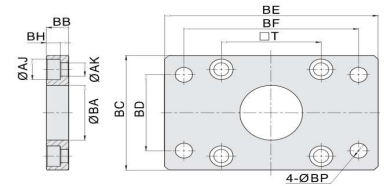
Ref.	AA	AC	AD	AE	AF	AG	AH	AP	AT
FJ-VBC32LB	158	142	8	47	32	24	32	7	4
FJ-VBC40LB	179	161	9	53	36	28	36	9	4
FJ-VBC50LB	190	170	10	65	45	32	45	9	5
FJ-VBC63LB	209	185	12	75	50	32	50	9	5
FJ-VBC80LB	248	210	19	95	63	41	63	12,5	6
FJ-VBC100LB	258	220	19	115	75	41	71	14,5	6
FJ-VBC125LB	290	250	20	140	90	45	90	16,5	8
FJ-VBC160LB	340	300	20	180	115	60	115	24	10
FJ-VBC200LB	380	320	30	220	135	70	135	24	12



Fijación



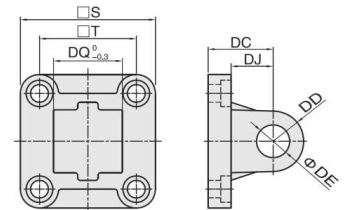
Ref.	AJ	AK	BA	BB	BC	BD	BE	BF	BH	BP	T
FJ-VBC32FA	11	7	30,5	10	47	32	80	64	6	7	32,5
FJ-VBC40FA			35,5	10	53	36	90	72	6	9	38
FJ-VBC50FA	14	9	40,5	12	65	45	110	90	8	9	46,5
FJ-VBC63FA			45,5	12	75	50	125	100	8	9	56,5
FJ-VBC80FA	17	11	55,5	16	95	63	154	126	10	12,5	72
FJ-VBC100FA			55,5	16	115	75	186	150	10	14,5	89
FJ-VBC125FA	19	13	62	20	140	90	218	180	12,5	16,5	110
FJ-VBC160FA			72	20	180	115	278	230	14,5	18,5	140
FJ-VBC200FA	26	18	82	25	220	135	318	270	17	22	175



Basculante hembra



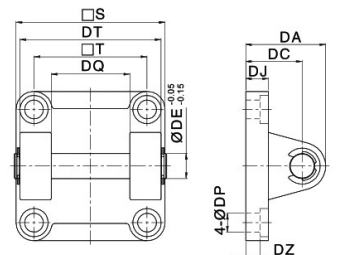
Ref.	DA	DC	DE	DJ	DP	DQ	DZ	S	T
FJ-VBC32CA	31	22	10	9,5	7	25,8	5,5	47	32,5
FJ-VBC40CA	37	25	12	9,5	7	27,8	5,5	53	38
FJ-VBC50CA	39	27	12	10,5	9	31,8	6,5	65	46,5
FJ-VBC63CA	47	32	16	10,5	9	39,7	6,5	75	56,5
FJ-VBC80CA	51	36	16	14,5	11	49,7	10	95	72
FJ-VBC100CA	61	41	20	14,5	11	59,7	10	115	89
FJ-VBC125CA	75	50	25	17,5	13	69,7	10	140	110
FJ-VBC160CA	82,5	54,5	30	21	18	89,7	20	176	140
FJ-VBC200CA	88,5	59,5	30	26	18	89,7	25	218	175



Basculante macho



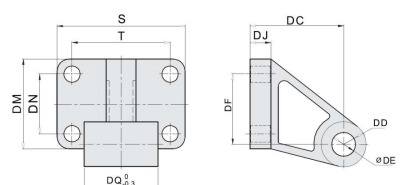
Ref.	DA	DC	DE	DJ	DP	DQ	DT	DZ	S	T
FJ-VBC32CB	31	22	10	9,5	7	26	45	5,5	47	32,5
FJ-VBC40CB	37	25	12	9,5	7	28	52	5,5	53	38
FJ-VBC50CB	39	27	12	10,5	9	32	60	6,5	65	46,5
FJ-VBC63CB	47	32	16	10,5	9	40	70	6,5	75	56,5
FJ-VBC80CB	51	36	16	14,5	11	50	90	10	95	72
FJ-VBC100CB	61	41	20	14,5	11	60	110	10	115	89
FJ-VBC125CB	75	50	25	17,5	13	70	130	10	140	110
FJ-VBC160CB	82	54,5	30	21	18	90	163,5	20	176,5	140
FJ-VBC200CB	89,5	59,5	30	26	18	90	175	25	218	175



Basculante hembra



Ref.	DC	DD	DE	DF	DJ	DO	DM	DN	S	T
FJ-VBC32CR	32	10	10	21	8	25,8	31	18	51	38
FJ-VBC40CR	36	11	12	24	10	27,8	35	22	54	41
FJ-VBC50CR	45	13	12	33	12	31,8	45	30	65	50
FJ-VBC63CR	50	15	16	37	12	39,7	50	35	67	52
FJ-VBC80CR	63	19	20	47	14	49,7	60	40	86	66
FJ-VBC100CR	71	19	20	55	15	59,7	70	50	96	76
FJ-VBC125CR	90	22,5	25	70	20	69,7	90	60	124	94



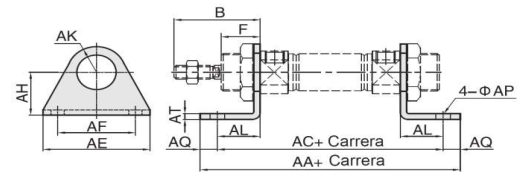
ACCESORIOS DE MONTAJE PARA CILINDROS NEUMÁTICOS



CILINDROS ISO REDONDOS

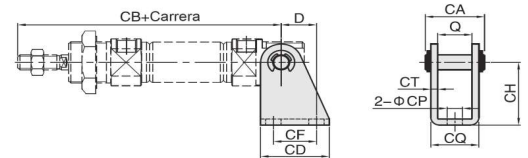
Pie de fijación (suministro 2 unidades)

Ref.	AA	AC	AE	AF	AH	AK	AL	AP	AQ	AT	B	F
FJ-IA12LB	88	76	42	32	20,5	12,5	13		6		38	17
FJ-IA16LB	94	82								4		
FJ-IA20LB	114	95	54	40	22,5	20	18	7	8		44	20
FJ-IA25LB	117	10									50	22



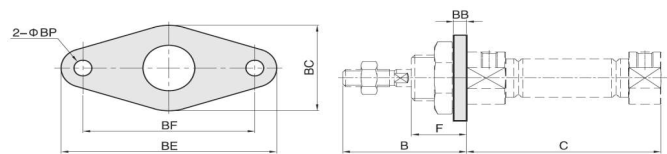
Basculante

Ref.	D	Q	CA	CB	CD	CF	CH	CP	CQ	CT
FJ-IA12SDB	13	12,1	21,5	91	85	15	27	5,5	17,1	2,5
FJ-IA16SDB				98						
FJ-IA20SDB	16	16,1	29	115	32	20	30	6,6	24,1	4
FJ-IA25SDB				126						



Fijación

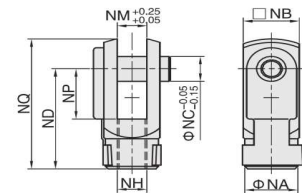
Ref.	B	C	BB	BC	BE	BF	F
FJ-IA12FA	38	50	4	30	53	40	17
FJ-IA16FA		56					
FJ-IA20FA	44	62	5	40	66	50	20
FJ-IA25FA	50	65					22



ACCESORIOS DE VÁSTAGO

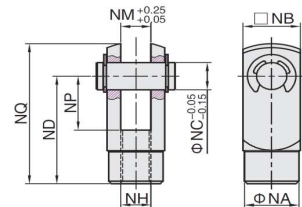
Horquilla

Ref.	NA	NB	NC	ND	NH	NM	NP	NQ
FJ-M6X1YCJ	10	12	6	24	M6X1	6	12	31
FJ-M8X1.25YCJ	14	16	8	32	M8X1,25	8	16	42
FJ-M10X1.25YCJ	18	20	10	40	M10X1,25	10	20	52
FJ-M12X1.25YCJ	20	24	12	48	M12X1,25	12	24	62
FJ-M16X1.5YCJ	26	32	16	64	M16X1,5	16	32	83
FJ-M20X1.5YCJ	34	40	20	80	M20X1,5	20	40	105
FJ-M27X2YCJ	42	55	30	110	M27x2	30	55	148



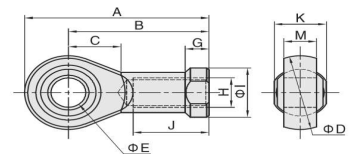
Horquilla tamaños grandes

Ref.	NA	NB	NC	ND	NH	NM	NP	NQ
FJ-M36X2YJ	60	70	35	144	M36X2	35	72	188
FJ-M42X2YJ	70	85	40	168	M42X2	40	84	232
FJ-M48X2YJ	80	90	50	192	M48X2	50	96	265



Rótula

Ref.	A	B	C	D	E	G	H	I	J	K	M
FJ-M6X1BJ	40,5	31	11	20	6	7	M6X1	13	18	11	7
FJ-M8X1.25BJ	48	36	12	24	8	7,5	M8X1,25	16	20	14	9
FJ-M10X1.25BJ	57,5	44	15,5	28	10	8	M10X1,25	19	25	17	10,5
FJ-M12X1.25BJ	66,5	51,5	17	32	12	9,5	M12X1,25	22	25	19	12
FJ-M16X1.5BJ	85	65	25	40	16	11	M16X1,5	27	35	24	15
FJ-M20X1.5BJ	102	77	30	50	20	12,5	M20X1,5	34	40	30	18
FJ-M27X2BJ	145	109	40,5	70	30	18,5	M27X2	50	60	43	25
FJ-M36X2BJ	168	127,5	39,5	80	35	19	M36X2	57	70	49,5	28,5



Compensador

Ref.	ND	MB	MC	MD	ME	MF	MG	MH	MI
FJ-M6X1FD	35	12	5	19	5	5	M6X1	7	M6X1
FJ-M8X1.25FD			51	20			M8X1,25	8	M8X1,25
FJ-M10X1.25FD	58	22	6	28	8	12	M10X1,25	10	M10X1,25
FJ-M12X1.25FD			7	29			M12X1,25	12	M12X1,25
FJ-M16X1.5FD	90	27	8	51	12	14	M16X1,5	15	M16X1,5
FJ-M20X1.5FD	102	29	10	59	14	18	M20X1,5	22	M20X1,5
FJ-M27X2FD	140	40	13,5	75	25	22	M27X2	30	M27X2
FJ-M36X2FD	148	42	18	73	25	40	M36X2	40	M36X2

